

PPIL1 Antibody (Center)
Affinity Purified Rabbit Polyclonal Antibody (Pab)
Catalog # AP16758c

Specification

PPIL1 Antibody (Center) - Product Information

Application	WB,E
Primary Accession	Q9Y3C6
Other Accession	Q9D0W5 , Q5E992 , NP_057143.1
Reactivity	Human
Predicted	Bovine, Mouse
Host	Rabbit
Clonality	Polyclonal
Isotype	Rabbit IgG
Calculated MW	18237
Antigen Region	63-91

PPIL1 Antibody (Center) - Additional Information

Gene ID 51645

Other Names

Peptidyl-prolyl cis-trans isomerase-like 1, PPlase, Rotamase PPIL1, PPIL1, CYPL1

Target/Specificity

This PPIL1 antibody is generated from rabbits immunized with a KLH conjugated synthetic peptide between 63-91 amino acids from the Central region of human PPIL1.

Dilution

WB~~1:1000

E~~Use at an assay dependent concentration.

Format

Purified polyclonal antibody supplied in PBS with 0.09% (W/V) sodium azide. This antibody is purified through a protein A column, followed by peptide affinity purification.

Storage

Maintain refrigerated at 2-8°C for up to 2 weeks. For long term storage store at -20°C in small aliquots to prevent freeze-thaw cycles.

Precautions

PPIL1 Antibody (Center) is for research use only and not for use in diagnostic or therapeutic procedures.

PPIL1 Antibody (Center) - Protein Information

Name PPIL1

Synonyms CYPL1

Function Involved in pre-mRNA splicing as component of the spliceosome (PubMed:[11991638](#), PubMed:[28076346](#), PubMed:[28502770](#), PubMed:[33220177](#)). PPlases accelerate the folding of proteins. Catalyzes the cis-trans isomerization of proline imidic peptide bonds in oligopeptides (PubMed:[16595688](#)). Catalyzes prolyl peptide bond isomerization in CDC40/PRP17 (PubMed:[33220177](#)). Plays an important role in embryonic brain development; this function is independent of its isomerase activity (PubMed:[33220177](#)).

Cellular Location

Nucleus

Tissue Location

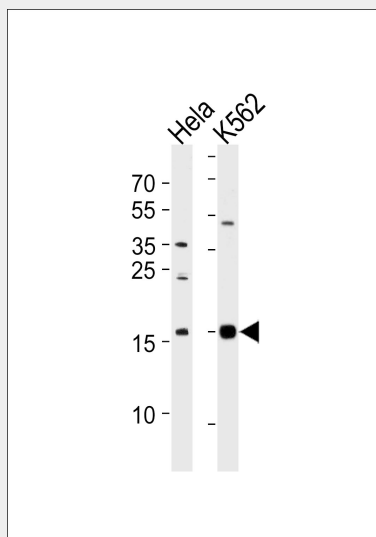
Ubiquitous, with the most abundant expression in heart and skeletal muscle

PPIL1 Antibody (Center) - Protocols

Provided below are standard protocols that you may find useful for product applications.

- [Western Blot](#)
- [Blocking Peptides](#)
- [Dot Blot](#)
- [Immunohistochemistry](#)
- [Immunofluorescence](#)
- [Immunoprecipitation](#)
- [Flow Cytometry](#)
- [Cell Culture](#)

PPIL1 Antibody (Center) - Images



Western blot analysis of lysates from HeLa, K562 cell line (from left to right), using PPIL1 Antibody (Center)(Cat. #AP16758c). AP16758c was diluted at 1:1000 at each lane. A goat anti-rabbit IgG H&L(HRP) at 1:5000 dilution was used as the secondary antibody. Lysates at 35ug per lane.

PPIL1 Antibody (Center) - Background

This gene is a member of the cyclophilin family of

peptidylprolyl isomerases (PPIases). The cyclophilins are a highly conserved, ubiquitous family, members of which play an important role in protein folding, immunosuppression by cyclosporin A, and infection of HIV-1 virions. Based on similarity to other PPIases, this protein could accelerate the folding of proteins and might catalyze the cis-trans isomerization of proline imidic peptide bonds in oligopeptides.

PPIL1 Antibody (Center) - References

Wang, X., et al. J. Biol. Chem. 285(7):4951-4963(2010)
Xu, C., et al. J. Biol. Chem. 281(23):15900-15908(2006)
Xu, C., et al. J. Biomol. NMR 31(2):179-180(2005)
Mungall, A.J., et al. Nature 425(6960):805-811(2003)
Clark, H.F., et al. Genome Res. 13(10):2265-2270(2003)